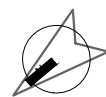
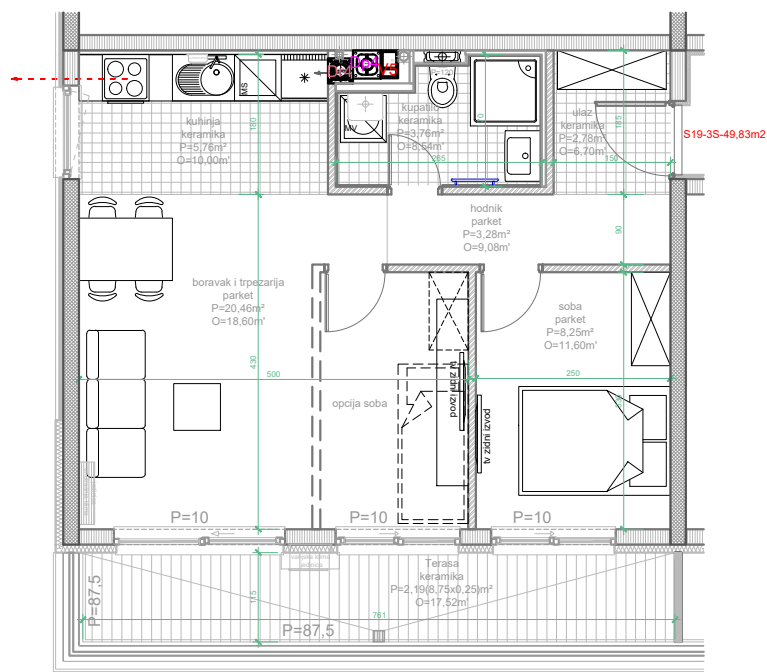


## TLOCRT STANA

MJ 1:100



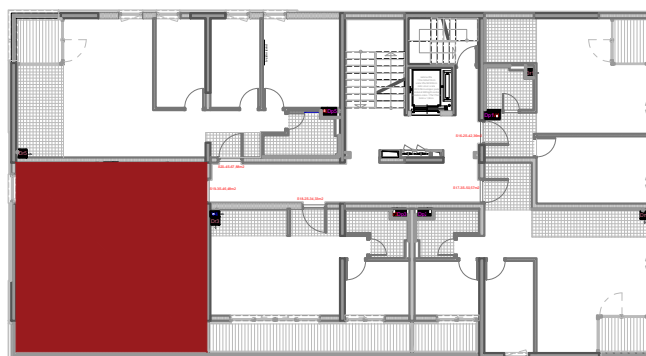
## BILANS POVRŠINA:

	STVARNA POV.m <sup>2</sup>	k	PRODAJNA POV.m <sup>2</sup>
ULAZ	2,78	1.0	2,78
KUHINJA	5,76	1.0	5,76
DNEVNI BORAVAK I TRPEZARIJA	20,46	1.0	20,46
KUPATILO	3,76	1.0	3,76
HODNIK	3,28	1.0	3,28
SOBA	8,25	1.0	8,25
TERASA	8,75	0.25	2,19
<b>UKUPNO</b>	<b>53,04</b>		<b>46,48</b>

KVADRATURE STANOVA SU PROJEKTANTSKE

## PODACI O STANU

STAN: **S19**  
 SPRAT: **4.SPRAT**  
 STRUKTURA: **TROSOBAN**  
 POVRŠINA: **46,48m<sup>2</sup>**



POLOŽAJ NA ETAŽI